

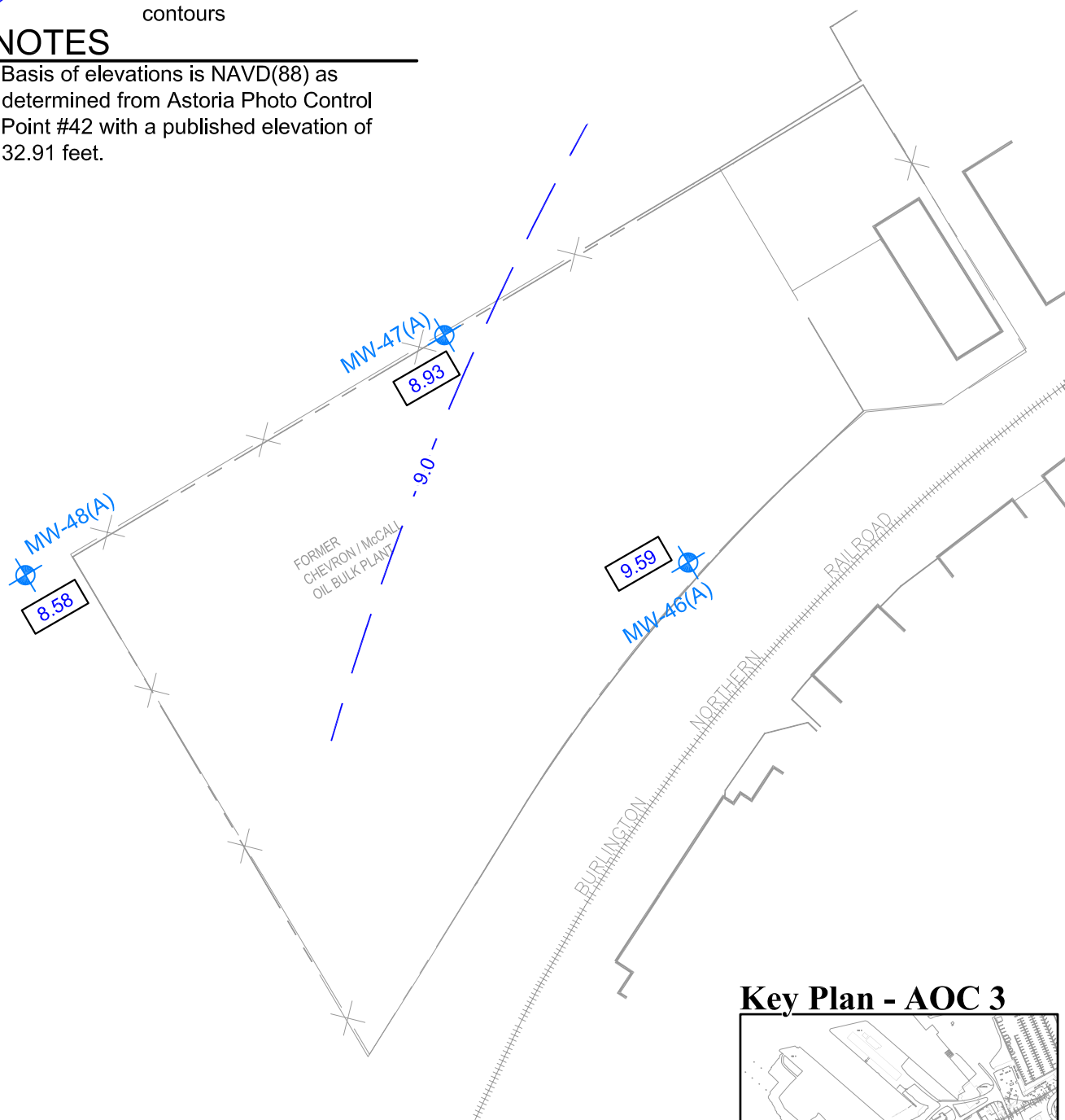


EXPLANATION

- 10.31 ← Ground water elevation
-  MW-27 ← Monitoring well location & designation
-  9.0 ← Ground water elevation contours

NOTES

Basis of elevations is NAVD(88) as determined from Astoria Photo Control Point #42 with a published elevation of 32.91 feet.



Key Plan - AOC 3

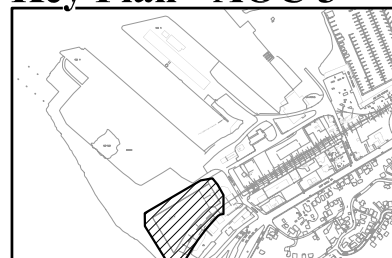


FIGURE 6-77
POTENTIOMETRIC SURFACE
AOC 3 - JULY 19, 2004
Remedial Investigation/Feasibility Study
Astoria Area-Wide Petroleum Site
Astoria, Oregon